

Farmington Canal and River Trail

Off road parking is located on Town Farm Road (41° 45' 19.34" N 72° 49' 40.27" W), 0.2 miles south of Sub Edge Farm. Look for the white Farmington's Open Space sign and the yellow blazes (Y) that mark the trail. Hike 0.1 mile, crossing the Farmington Canal, and turn right onto the canal's towpath. When you pass the double yellow blaze, the trail returns to the canal. You are approaching the junction of the Farmington Canal with the Unionville Feeder Canal which is marked by a sign at 0.25 miles (photo). Behind you, the Farmington Canal continued north into Massachusetts. To the right of the sign, is the Unionville Feeder Canal which provided most of the water for the Farmington Canal in Connecticut. The Feeder Canal was 3 miles long, starting at a dam located near Farmington's Town Hall. On the map, the person symbol is at the canal junction and the grey line is the route of the Feeder Canal. Directly behind the sign, the Farmington Canal continued over the Farmington River on its way to New Haven harbor. This was made possible by building the 280 foot long Farmington Aqueduct, the largest one on the Farmington Canal, rising 36 feet above the river. The almost complete west abutment of the aqueduct, is its best preserved remnant.

50 feet in front of the sign, the yellow blazed trail continues over the towpath, descending steeply to the river floodplain. Side stepping here is encouraged for personal safety and to reduce trail erosion. At 0.3 miles, the trail makes a 90° turn left. The Canal Trail now becomes the River Trail, as it parallels the Farmington River. Before making this turn, continue straight on a short unmarked trail toward the river. As you reach the river, look back to observe the almost complete west abutment of the Farmington Aqueduct. The Aqueduct was Connecticut's major engineering accomplishment in the 1820's.

Return to the River Trail to continue north for 0.2 miles, reaching the large corn fields in Avon (triangle on map). Here the trail becomes the Fisher Farms Trail and continues along the river to Old Farm Road. As of December 2015, the trail was good to Avon, but then became overgrown with brush. The total round trip mileage of the Farmington Canal & River Trail is 1.0 miles.

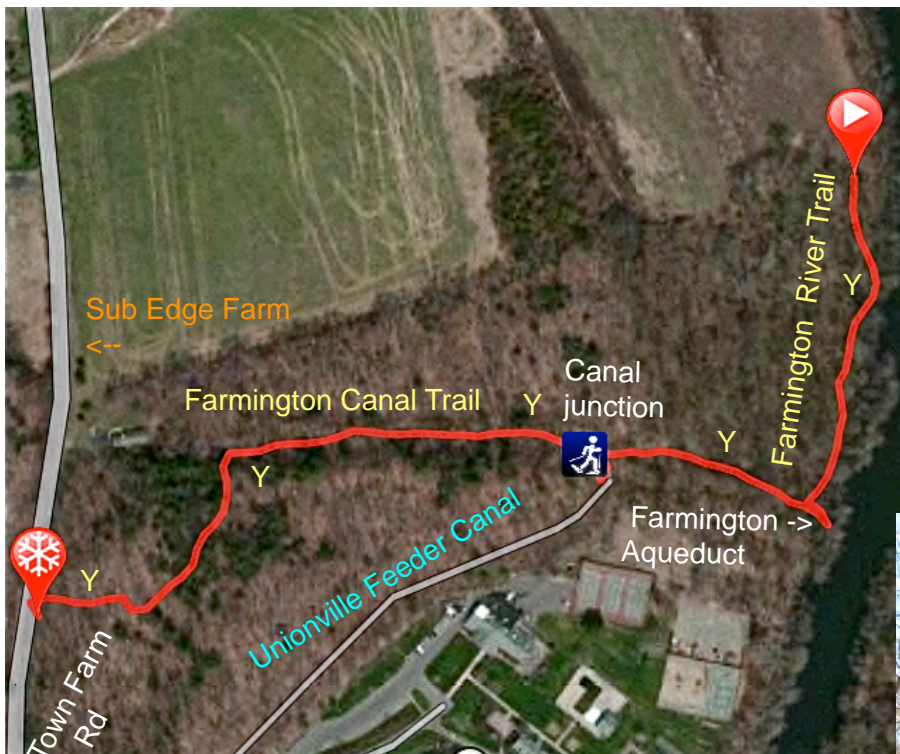
4 Historic Markers provide additional information of the Canal Era:

<http://www.hmdb.org/marker.asp?marker=92153>

<http://www.hmdb.org/Marker.asp?Marker=33017>

<http://www.hmdb.org/Marker.asp?Marker=92155>

<http://www.hmdb.org/Marker.asp?Marker=92442>



satellite map of the Farmington Canal & River Trail



trail sign at the canal junction



Farmington Aqueduct's west abutment

Alan M. Perrie
12-31-15