

Handicapped Trails to Farmington River fishing piers, located in Farmington and Unionville.

From Farmington center, head west and take your first left after crossing the bridge into the parking lot (41° 43' 43.20" N 72° 49' 45.98" W). Farmington's fishing pier is 50 yards down a paved path that starts from a concrete platform. The river is quite wide at this location.

Unionville's fishing pier has 2 access points: Trail #1 starts at the parking lot for the Farmington River Trail (41° 45' 59.63" N 72° 53' 58.00" W). It is 0.6 miles on the paved trail to the gravel fishing pier (photo). The bonus is experiencing the Artist Tunnel (photo) under route 4. The large mural, "Connections, from Farmington to the world", was created in 2008.

Trail #2 is the trail if you are short on time. The paved trail is only 0.1 miles from the parking loop off Railroad Ave in Unionville (41° 45' 19.73" N 72° 53' 20.06" W). There are 2 gravel paths to the pier. The more gradual path is closer to Railroad Ave, and the steeper one is closer to River Road.

Unionville's fishing pier is on property donated to the Farmington Land Trust by Tom Zipp, a local developer. Fishing at this location will have colder & more aerated water than in Farmington. There is a small rapid upstream and an eddy downstream from the pier.



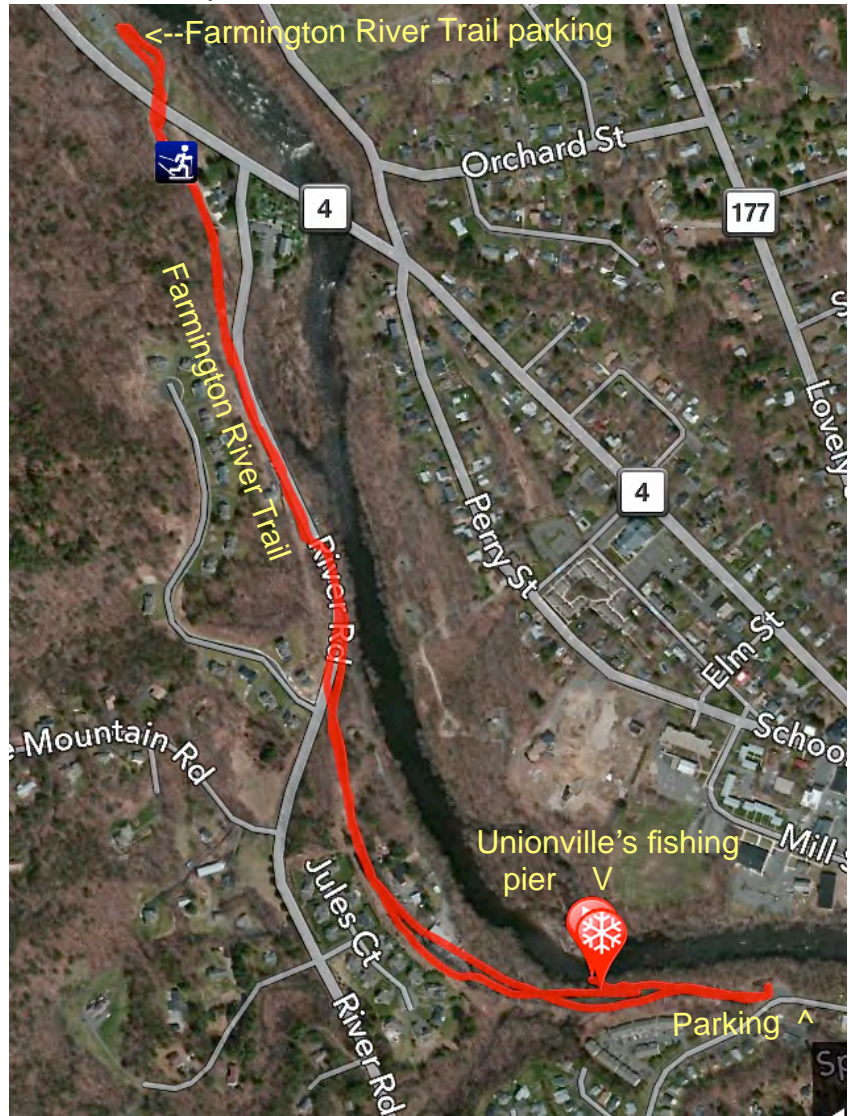
Farmington's fishing pier



Unionville's fishing pier



Unionville's Trail #1's Artist Tunnel



Unionville's Trail #1 starts at the top left and Trail #2 starts at the bottom right.

Alan M Perrie
6/12/16